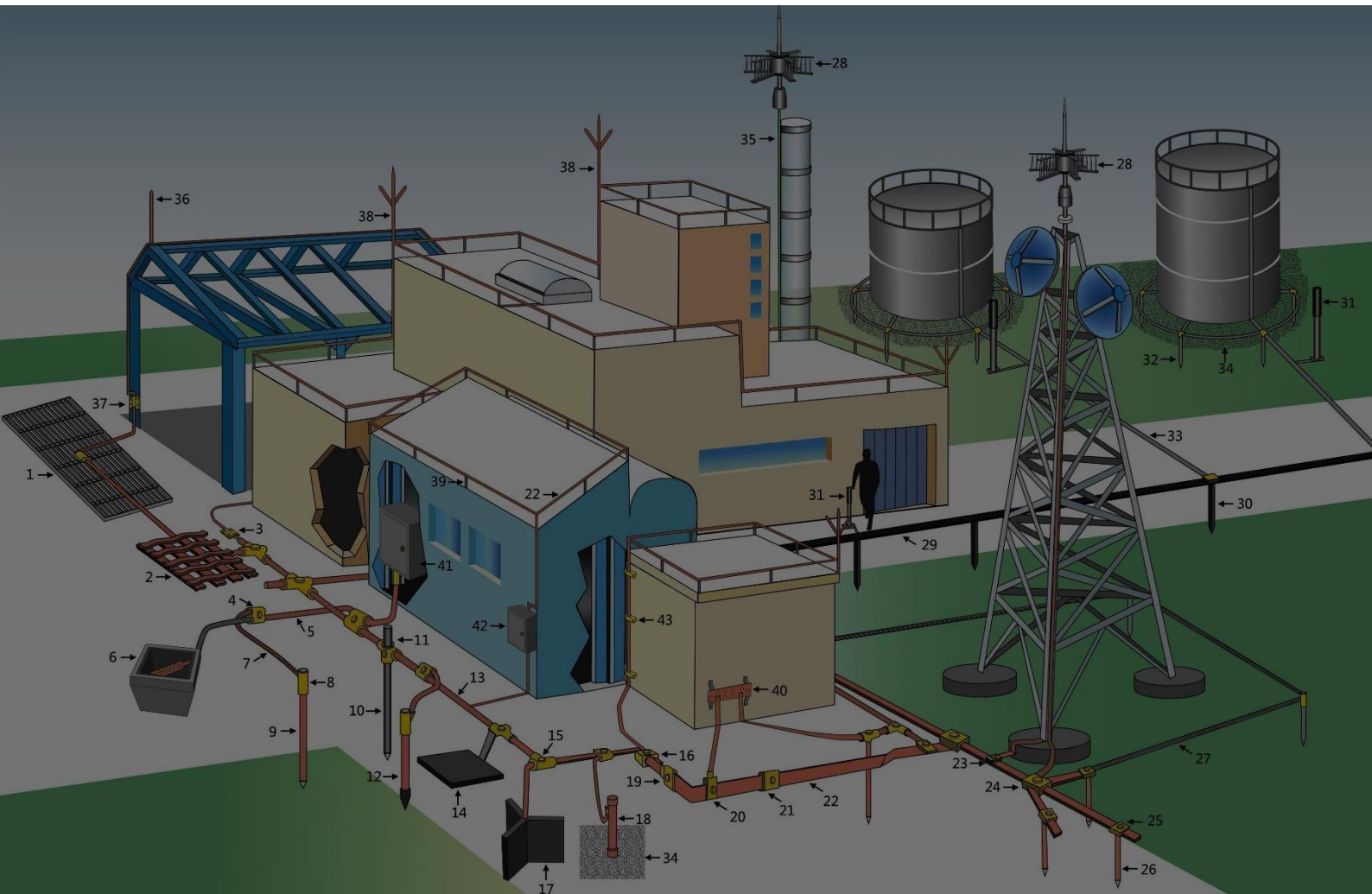




LIGHTNING PROTECTION
SPECIALIST

LIGHTNING PROTECTION CONVENTIONAL & GROUNDING CATALOGUE



GROUND ROD & ACCESSORIES | CONNECTION FITTINGS | DOWN CONDUCTOR |
AIR TERMINAL & CLAMP | EXOTHERMIC WELDING CONNECTION

TABLE OF CONTENT



Introduction & Order Information.....	1	DC Tape Clamp	14
GROUND ROD & ACCESORIES		Square Tape Clamp.....	14
Copper Bounded Ground Rod.....	2	Oblong Tape Clamp	15
Earth Clamp.....	2	Tape Clip.....	15
Galvanized Ground Rod	3	Ubolt Tape Clamp.....	15
Ground Copper Rod.....	3	Rod Tape Earth Clamp.....	15
Chemical Ground Rod.....	3	Tape Support	16
CONNECTION FITTINGS		Lightning Protection Conductor Support.....	16
U Bolt Earth Clamp	4	EXOTHERMIC WELDING CONNECTION	
DC Wire Clamp	4	Exothermic Welding Powder.....	17
Cross Wire Clamp.....	4	Exothermic Welding Mould	17
EZ Wire Clamp.....	5	Horizontal Connection.....	18
Tower Earth Clamp.....	5	Parallel Horizontal Connection	18
Parallel Groove Clamp.....	5	T Horizontal Connection	18
Parallel Groove Wire Clamp	6	X Horizontal Connection.....	19
C Clamp	6	Busbar Tape to Busbar Tape Connection	19
Cable Terminal Lug.....	6	X Busbar Tape to Busbar Tape Connection.....	20
Split Bolt Clamp	7	T Busbar Tape to Busbar Tape Connection.....	20
Earth Point.....	7	T Cable to Busbar Tape Connection	21
Earth Boss.....	7	Cable To Busbare Tape Horizontal Connection.....	21
Earth Connector (Hammerlock)	8	Cable To Ground Rod (GR)	22
Ground Copper Busbar.....	8	Cable to Ground Rod (GT)	22
Equipotential Terminal Box.....	8	Busbar Tape to Ground Rod	23
DOWN CONDUCTOR		Cable to Rebar	23
Bare Copper Strand Wire.....	9	Handle Clamp.....	24
PVC Copper Strand Wire	9	Flint Gun.....	24
Copper Clad Steel Strand Wire	10	Moulding Brush	24
Tinned Copper Strand Wire.....	10	Sealing Compound	25
Copper Bonded Steel Grounding Round Wire	11	OTHER EARTHING MATERIAL	
Zinc Bonded Steel Grounding Round Wire	11	Concrete Earth Pit.....	26
Copper Clad Steel Flat Bar.....	12	PVC Earth Pit	26
Pure Copper Bar.....	12	Ground Enhancement Powder.....	26
Pure Copper Tape.....	13	Grounding Module	27
AIR TERMINAL & CLAMP			
Air Terminal Rod.....	14		

INTRODUCTION

PT Lancar Makmur Sejahtera has experienced in Lightning Protection & Grounding System for 20 years. From this experience, We build a product called LMS[®]. We guarantee that the product build in quality and high performance, so we can support our customer needs.

HOW TO ORDER LMS PRODUCT

This catalogue list is for grounding equipment. Look in index for the item you need. If you can't find what you Need you can contact our local agent. We have over 1000 design for grounding equipment.

1. What connection do you require?

Available connection are listed in this catalogue. We accept request design with minimum purchase. First, you must choose your connection, and choose mould, welding material and tools that you need.

2. What are the conductor & ground rod size?

Choose your conductor and ground rod size listed in this catalogue. For connection, there is connection Cable to ground rod, cable to cable, cable to busbar tape, cable to rebar, busbar tape to busbar tape. If you have any request, you can contact our agent.

3. You must have the following to make a weld?

1. Mould fit to your conductor.
2. Welding material required by your mould.
3. Handle clamps.
4. Flint gun
5. Accessories

MANUFACTURE CERTIFICATION

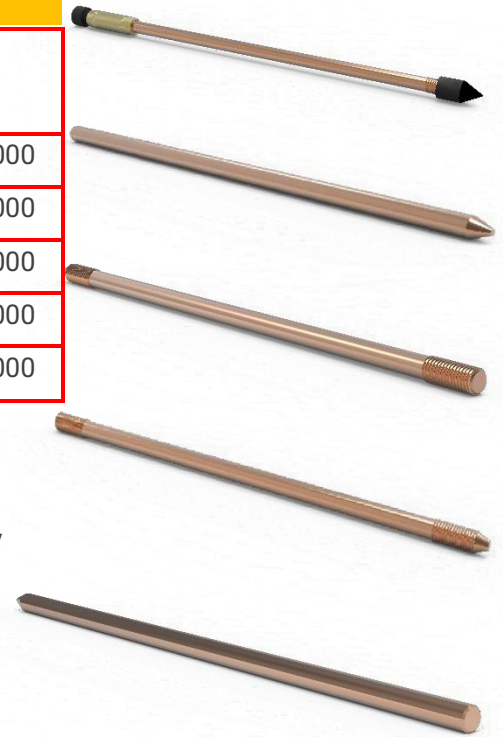
- UL
- ISO 9001-2015
- ISO 14001-2015
- OHSAS 18001-2007
- EN-50164-1:2008
- EN-50164-2:2008

GROUND ROD & ACCESORIES

COPPER BONDED GROUND ROD

No.	Part No.	Dia. (mm)	Threaded (in)	Length of supply(mm)				
				1200	1500	1800	2400	3000
1	LMS-CCR38	9	3/8"	1200	1500	1800	2400	3000
2	LMS-CCR12	12.5	1/2"	1200	1500	1800	2400	3000
3	LMS-CCR58	14.2	5/8"	1200	1500	1800	2400	3000
4	LMS-CCR34	17.2	3/4"	1200	1500	1800	2400	3000
5	LMS-CCR1	23	1"	1200	1500	1800	2400 </td <td>3000</td>	3000

- *Copper thickness is 0.254mm
- *Special size can be supplied on request.
- We can supply you three shapes as:
 - 1) Ground Rod can be made double heads thread, and thread can be packed by plastic sheath
 - 2) One end is pointed and the other end is threaded for extend
 - 3) One end is pointed and the other end is flat.



Coupling	Driving Head	Drilling Head	End Cup	Supporting rod
LMS-C83	LMS-DH83	LMS-DRH83	LMS-ENC83	LMS-CCR38
LMS-C21	LMS-DH21	LMS-DRH21	LMS-ENC21	LMS-CCR21
LMS-C85	LMS-DH85	LMS-DRH85	LMS-ENC85	LMS-CCR58
LMS-C43	LMS-DH43	LMS-DRH43	LMS-ENC43	LMS-CCR34
LMS-C01	LMS-DH01	LMS-DRH01	LMS-ENC01	LMS-CCR1

EARTH CLAMP

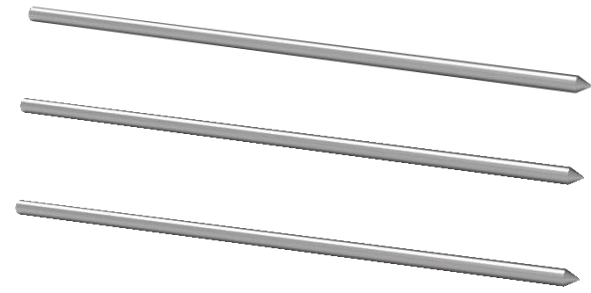
Part No.	Application of ground rod	Application of Cable
LMS-EC38	3/8"	10 – 35 mm
LMS-EC12	1/2"	10 – 35 mm
LMS-EC58	5/8"	16 – 70 mm
LMS-EC34	3/4"	16 – 95 mm
LMS-EC1	1"	35 – 120 mm



GALVANIZED GROUND ROD

No.	Part No.	Dia. (mm)	Length of supply(mm)				
			1200	1500	1800	2400	3000
1	LMS-GGD12	12	1200	1500	1800	2400	3000
2	LMS-GGD14	14	1200	1500	1800	2400	3000
3	LMS-GGD16	16	1200	1500	1800	2400	3000
4	LMS-GGD18	18	1200	1500	1800	2400	3000
5	LMS-GGD20	20	1200	1500	1800	2400	3000

*Zinc layer thickness is 0.07-0.10mm



GROUND COPPER ROD

No.	Part No.	Dia. (mm)	Length of supply(mm)				
			1200	1500	1800	2400	3000
1	LMS-GCR9	9	1200	1500	1800	2400	3000
2	LMS-GCR125	12.5	1200	1500	1800	2400	3000
3	LMS-GCR142	14.2	1200	1500	1800	2400	3000
4	LMS-GCR172	17.2	1200	1500	1800	2400	3000
5	LMS-GCR23	23	1200	1500	1800	2400	3000

➤ *Pure Copper

CHEMICAL GROUND ROD

Part No.	Spec mm	Material	impact current ΔR	PH value	resistance reduction (Ω)
LMS-CGR1	$\Phi 60 \times 1500$	Copper	$\leq 1\%$	$7 \pm 5\%$	3
LMS-CGR2	$\Phi 60 \times 3000$	Copper	$\leq 1\%$	$7 \pm 5\%$	2
LMS-CGR3	$\Phi 60 \times 1500$	Copper clad steel	$\leq 1\%$	$7 \pm 5\%$	3
LMS-CGR4	$\Phi 60 \times 3000$	Copper clad steel	$\leq 1\%$	$7 \pm 5\%$	2



CONNECTION FITTINGS

U-BOLT EARTH CLAMP

Part No.	Applicable max. rod Dia.	Application of conductor
LMS-UEC16	16 mm	16 – 95 mm
LMS-UEC20	20 mm	35 – 185 mm
LMS-UEC25	25 mm	50 – 185 mm

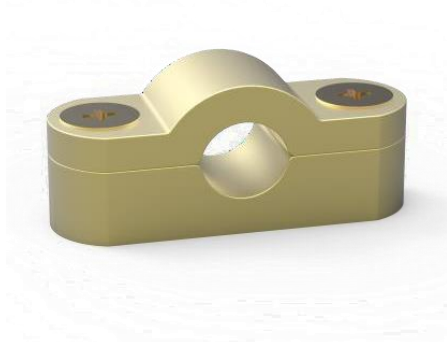
➤ Material: Brass



DC WIRE CLAMP

Part No.	Application of Cable
LMS-DWC50	50 mm
LMS-DWC70	70 mm
LMS-DWC95	95 mm
LMS-DWC120	120 mm
LMS-DWC150	150 mm
LMS-DWC185	185 mm

➤ Material: Brass

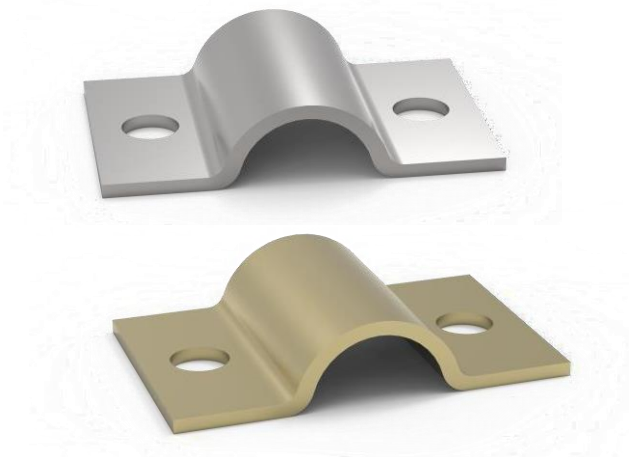


CROSS WIRE CLAMP

Part No.	Application of Cable
LMS-CWC35	35 mm × 35 mm
LMS-CWC50	50 mm × 50 mm
LMS-CWC70	70 mm × 70 mm
LMS-CWC120	120 mm × 120 mm
LMS-CWC150	150 mm × 150 mm
LMW-CWC240	240 mm × 240 mm

➤ Material: Brass





EZ WIRE CLAMP

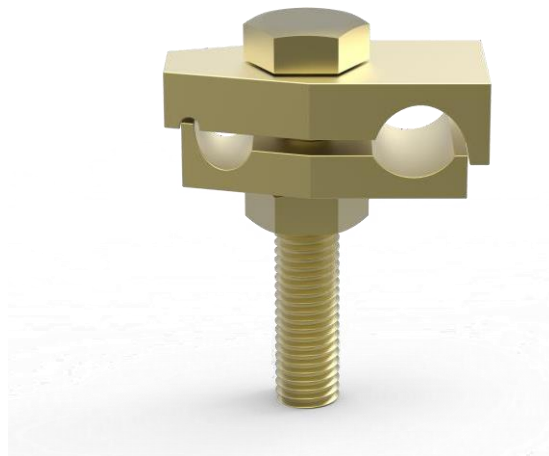
Part No.	Application of Cable
LMS-EWC50	50 mm
LMS-EWC70	70 mm
LMS-EWC95	95 mm
LMS-EWC120	120 mm
LMS-EWC150	150 mm
LMS-EWC185	185 mm

➤ Material: Brass or Stainless Steel

TOWER EARTH CLAMP

Part No.	Application of Cable
LMS-TEC1670	16 – 70 mm
LMS-TEC70120	70 – 120 mm
LMS-TEC120240	120 – 240 mm

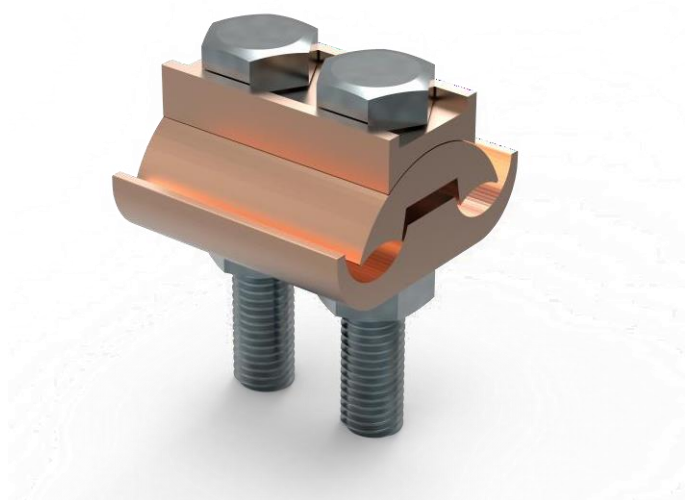
➤ Material: Brass



PARALLEL GROOVE CLAMP

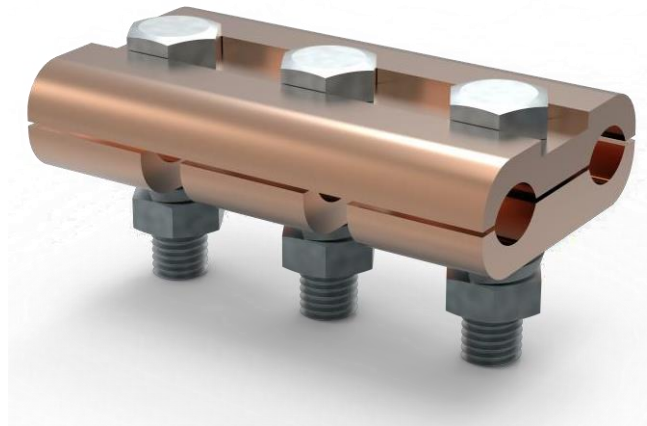
Part No.	Wire core section (mm)
LMS-PGC-12016	16 - 120
LMS-PGC-24050	50 - 240

➤ Material: Copper



PARALLEL GROOVE WIRE CLAMP

Part No.	Wire core section (mm)
LMS-PGWC3550	35 - 50
LMS-PGWC7095	70 - 95
LMS-PGWC120150	120 - 150
LMS-PGWC185240	185 - 240

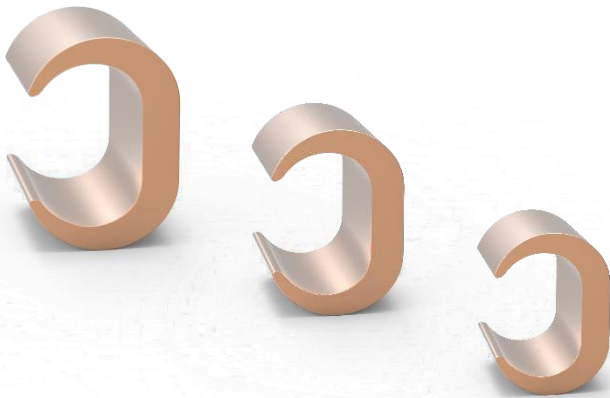


➤ Material: Copper

C CLAMP

Part No.	Total area Applicable Cables(mm)	Part No.	Total area Applicable Cables(mm)
LMS-C10	7.5 - 14	LMS-C154	123 - 154
LMS-C16	14.5 - 16	LMS-C190	155 - 190
LMS-C20	16.5 - 20	LMS-C240	191 - 240
LMS-C26	21 - 26	LMS-C288	241 - 288
LMS-C44	27 - 24	LMS-C365	289 - 365
LMS-C60	45 - 60	LMS-C450	366 - 450
LMS-C76	61 - 76	LMS-C560	451 - 560
LMS-C98	77 - 98	LMS-C700	561 - 700
LMS-C122	99 - 122		

➤ Material: Copper

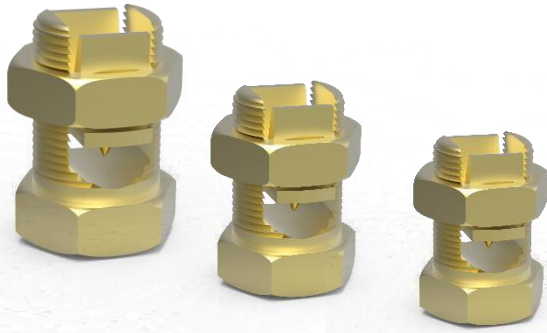


CABLE TERMINAL LUG

Part No.	Applicable Cables(mm)	Part No.	Applicable Cables(mm)
LMS-CTL10	10	LMS-CTL150	150
LMS-CTL16	16	LMS-CTL185	185
LMS-CTL25	25	LMS-CTL240	240
LMS-CTL35	35	LMS-CTL300	300
LMS-CTL50	50	LMS-CTL400	400
LMS-CTL70	70	LMS-CTL500	500
LMS-CTL95	95	LMS-CTL630	630

➤ Material: Copper





SPLIT BOLT CLAMP

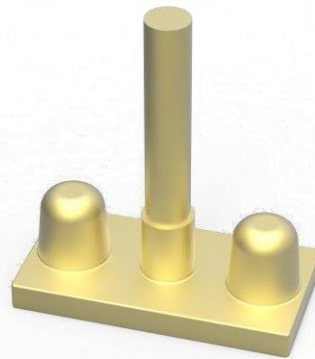
Part No.	Applicable Cables(mm)
LMS-SBC61	16
LMS-SBC52	25
LMS-SBC53	35
LMS-SBC5070	50-70
LMS-SBC95120	95-120
LMS-SBC150185	150-185
LMS-SBC210240	210-240

➤ Material: Brass

EARTH POINT

Part No.	Fix Hole No.	Cable size(mm)
LMS-EP95	M10X4	95 mm
LMS-EP95	M10X2	95 mm

➤ Material: Brass



EARTH BOSS



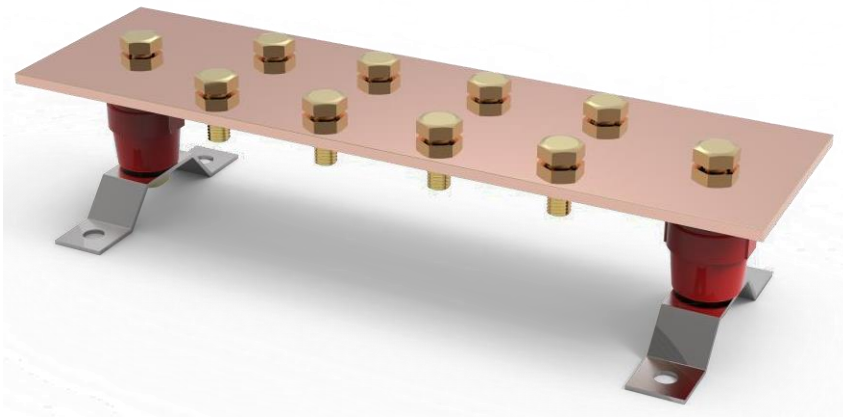
Part No.	Dia. (mm)	Length (mm)	Threaded
LMS-EP25	25	20	M6
LMS-EP30	30	20	M8
LMS-EP35	35	30	M10
LMS-EP50	50	30	M12

➤ Material: Stainless Steel 304 or 316

EARTH CONNECTOR (HAMMERLOCK)

Part No.	Applicable max. rod Dia.	Application of conductor
LMS-EC13	13mm	4~8mm
LMS-ECH14	14.2mm	4~8mm
LMS-ECH16	16mm	4~8mm

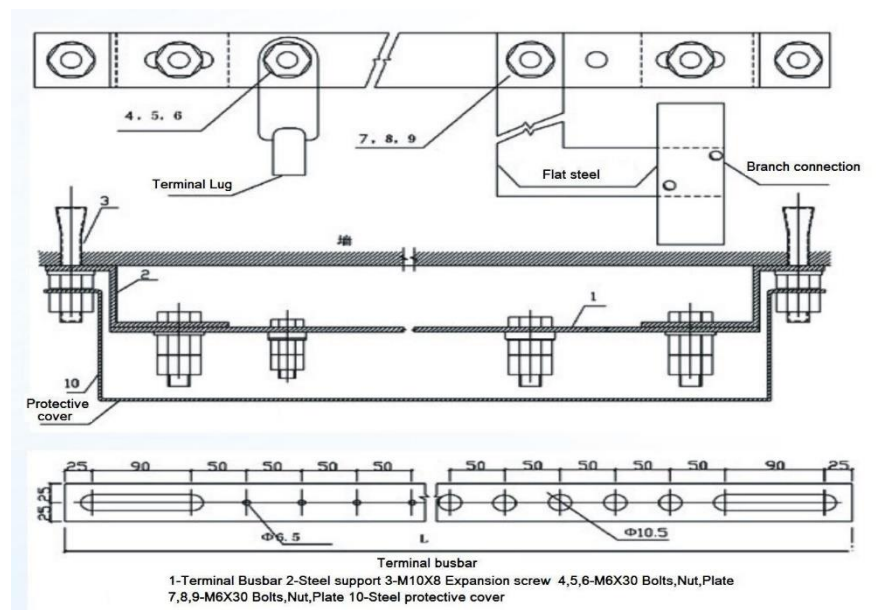
➤ Material: Copper



GROUND COPPER BUSBAR

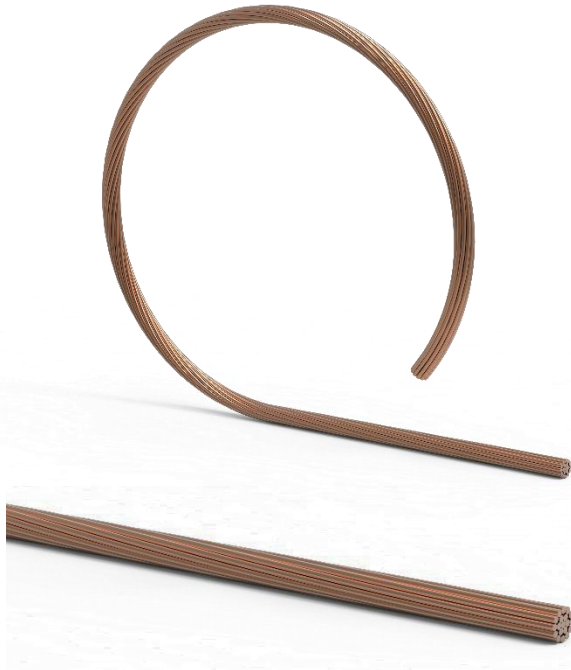
Part No.	Size(mm)
LMS-GCB4	4X40
LMS-GCB5	5X50
LMS-GCB65	6X50
LMS-GCB68	6X80
LMS-GCB1080	10X80
LMS-GCB510	5X100
LMS-GCB10100	10X100

EQUIPOTENTIAL TERMINAL BOX



DOWN CONDUCTOR

BARE COPPER STRAND WIRE



Part No.	Cross-sectional area (mm)	Strand/Dia. (mm)	Outer Dia. (mm)
LMS-BC16	16	7/1.70	5.10
LMS-BC25	25	7/2.10	6.40
LMS-BC35	35	7/2.50	7.60
LMS-BC50	50	19/1.80	9.00
LMS-BC70	70	19/2.10	10.50
LMS-BC95	95	19/2.50	12.5
LMS-BC120	120	19/2.80	14.20
LMS-BC150	150	37/2.30	16.00
LMS-BC185	185	37/2.50	17.70
LMS-BC240	240	37/2.80	19.80
LMS-BC300	300	61/3.20	22.50
LMS-BC400	400	61/2.90	26.10

➤ Material: Copper

PVC COPPER STRAND WIRE

Model	Cross-sectional area (mm)	Strand/Dia. (mm)	PVC Insulated
LMS-NYA16	16	7/1.70	
LMS-NYA25	25	7/2.10	
LMS-NYA35	35	7/2.50	
LMS-NYA50	50	19/1.80	
LMS-NYA70	70	19/2.10	
LMS-NYA95	95	19/2.50	
LMS-NYA120	120	19/2.80	
LMS-NYA150	150	37/2.30	
LMS-NYA185	185	37/2.50	
LMS-NYA240	240	37/2.80	
LMS-NYA300	300	61/3.20	
LMS-NYA400	400	61/2.90	



➤ Material: Copper

COPPER CLAD STEEL STRAND WIRE

Model	Cross-sectional area (mm)	Single Dia. (mm)	Number of Strands	Outside Dia. (mm)
LMS-BCC16	16	1.70	7	5.10
LMS-BCC25	25	2.15	7	6.50
LMS-BCC35	35	2.52	7	7.60
LMS-BCC50	50	3.00	7	9.00
LMS-BCC70	70	3.52	7	11.00
LMS-BCC95	95	2.52	19	12.60
LMS-BCC120	120	2.80	19	14.00
LMS-BCC150	150	3.20	19	16.00
LMS-BCC185	185	3.52	19	17.60
LMS-BCC200	200	3.66	19	18.35
LMS-BCC240	240	4.00	19	20.00
LMS-BCC300	300	3.70	37	22.40
LMS-BCC400	400	3.70	37	25.90

- Material: Copper clad steel
- Conductivity: 15%-21%-30%-40%

TINNED COPPER STRAND WIRE

Part No.	Cross-sectional area (mm)	Strand/Dia. (mm)	Outer Dia. (mm)
LMS-TSW16	16	7/1.70	5.10
LMS-TSW25	25	7/2.10	6.40
LMS-TSW35	35	7/2.50	7.60
LMS-TSW50	50	19/1.80	9.00
LMS-TSW70	70	19/2.10	10.50
LMS-TSW95	95	19/2.50	12.5
LMS-TSW120	120	19/2.80	14.20
LMS-TSW150	150	37/2.30	16.00
LMS-TSW185	185	37/2.50	17.70
LMS-TSW240	240	37/2.80	19.80
LMS-TSW300	300	61/3.20	22.50
LMS-TSW400	400	61/2.90	26.10

- Material: Tinned Copper



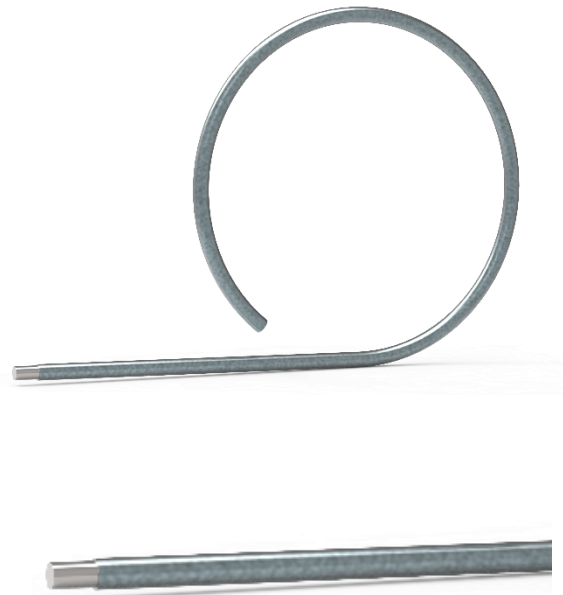
COPPER BONDED STEEL GROUNDING ROUND WIRE

Part No.	Dia. (mm)	Copper thickness (mm)	Length of supply
LMS-CBS10	Φ10	0.25~1.00	100m / roll
LMS-CBS12	Φ12	0.25~1.00	100m / roll
LMS-CBS14	Φ14	0.25~1.00	100m / roll
LMS-CBS15	Φ16	0.25~1.00	6m
LMS-CBS17	Φ17.2	0.25~1.00	6m
LMS-CBS18	Φ18	0.25~1.00	6m
LMS-CBS20	Φ20	0.25~1.00	6m
LMS-CBS22	Φ22	0.25~1.00	6m
LMS-CBS25	Φ25	0.25~1.00	6m

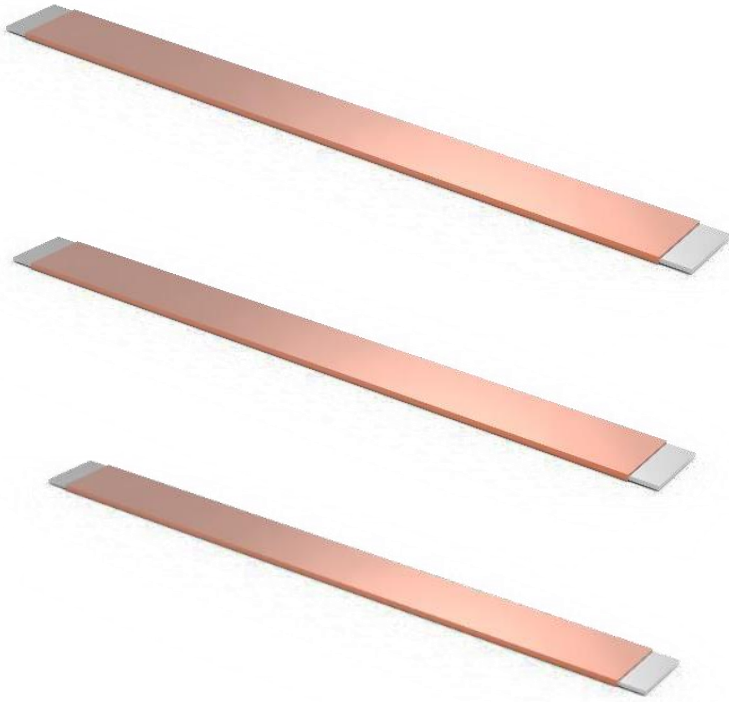
➤ Material: Copper bonded steel

ZINC BONDED STEEL GROUNDING ROUND WIRE

Model	Dia. (mm)	Zinc thickness (mm)	Length of supply
LMS-ZBS10	Φ10	1.00~3.00	Roll
LMS-ZBS12	Φ12	1.00~3.00	Roll
LMS-ZBS14	Φ14	1.00~3.00	Roll
LMS-ZBS16	Φ16	1.00~3.00	Roll
LMS-ZBS18	Φ18	1.00~3.00	6m
LMS-ZBS20	Φ20	1.00~3.00	6m
LMS-ZBS25	Φ25	1.00~3.00	6m
LMS-ZBS43	Φ43	1.00~3.00	6m



➤ Material: Zinc bonded steel



COPPER CLAD STEEL FLAT BAR

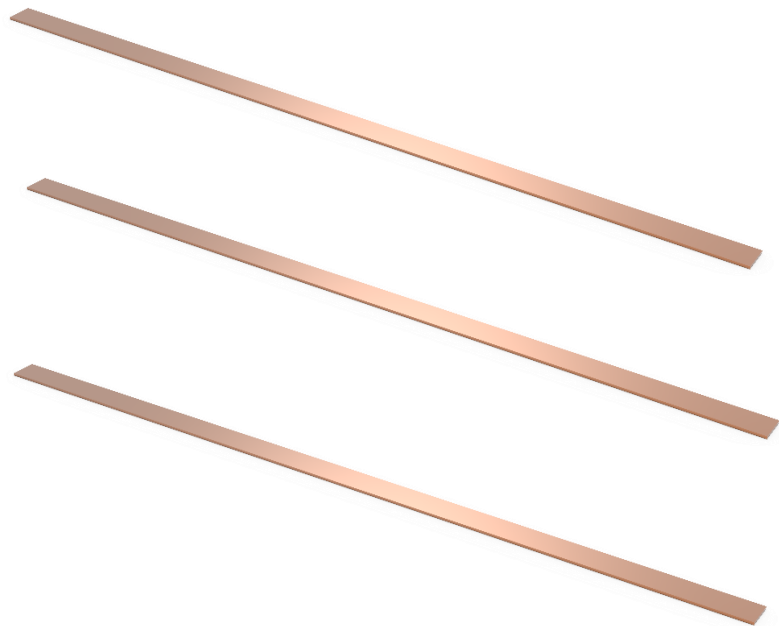
Part No.	Section size Width × Length (mm)
LMS-CCFB330	3 × 30
LMS-CCFB430	4 × 40
LMS-CCFB550	5 × 50
LMS-CCFB614	6 × 14
LMS-CCFB620	6 × 20
LMS-CCFB722	7 × 22
LMS-CCFB727	7 × 27
LMS-CCFB732	7 × 32
LMS-CCFB737	7 × 37
LMS-CCFB837	8 × 37

➤ Material: Copper clad steel

PURE COPPER BAR

Part No.	Section size Width × Length (mm)
LMS-PCB320	3 × 20
LMS-PCB325	3 × 25
LMS-PCB330	3 × 30
LMS-PCB425	4 × 25
LMS-PCB440	4 × 40
LMS-PCB450	4 × 50
LMS-PCB550	5 × 50
LMS-PCB625	6 × 25
LMS-PCB630	6 × 30
LMS-PCB640	6 × 40

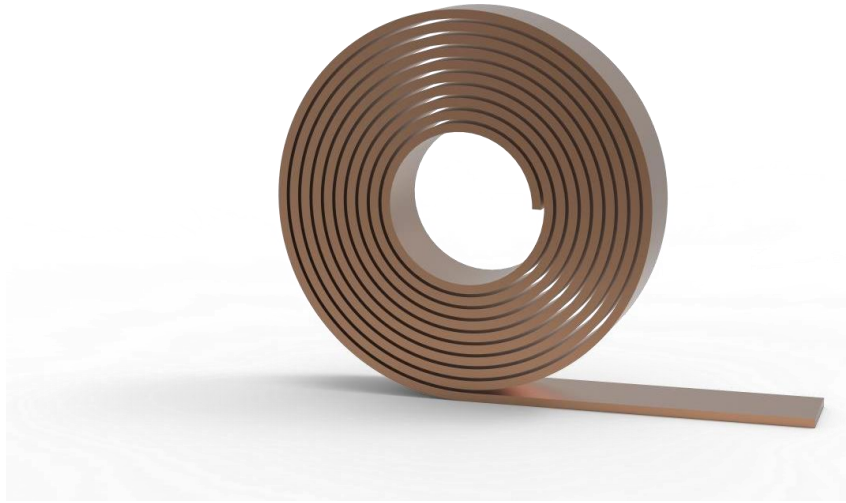
➤ Material: Copper



PURE COPPER TAPE

Part No.	Section size Width × Length (mm)
LMS-PCT320	3 × 20
LMS-PCT325	3 × 25
LMS-PCT330	3 × 30

- Material: Copper
- 100m/Roll or 50m/Roll



AIR TERMINAL & CLAMP



AIR TERMINAL ROD

Part No.	Rod length (mm)	Rod Dia. (mm)	Thread Dia.
LMS-ATR314	300	14	M16
LMS-ATR514	500	14	M16
LMS-ATR101	1000	14	M16
LMS-ATR201	2000	14	M16
LMS-ATR516	500	16	M18
LMS-ATR116	1000	16	M18
LMS-ATR216	2000	16	M18

- The Air Terminal Rod is made up of high conductivity E Grade Copper. The rods can be installed with or without Multiple Points.



DC TAPE CLAMP

Part No.	Tape size (mm)
LMS-DTC253	25 x 3
LMS-DTC256	25 x 6

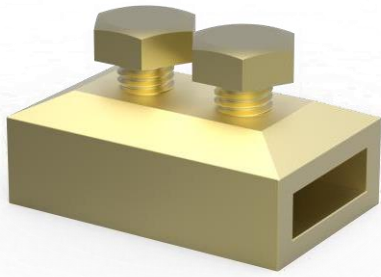
- Material : Brass



SQUARE TAPE CLAMP

Part No.	Tape size (mm)
LMS-STC253	25 x 3
LMS-STC256	25 x 6

- Material : Brass



OBLONG TEST CLAMP

Part No.	Max. Tape size (mm)
LMS-OTC268	26 x 8

➤ Material: Brass

TAPE CLIP

Part No.	Tape size (mm)
LMS-TC253	25 x 3
LMS-TC256	25 x 6

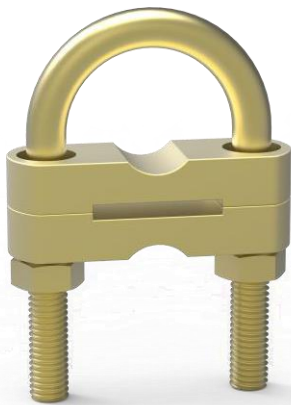
➤ Material: Brass



UBOLT TAPE CLAMP

Part No.	Application of ground rod	Application of Tape
LMS-UTC325	9.5-20mm	3 x 25 mm

➤ Material : Brass



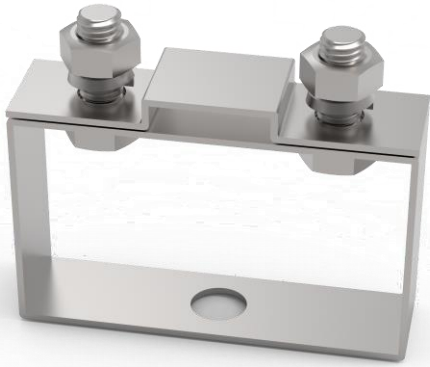
ROD TAPE EARTH CLAMP

Part No.	Application of ground rod	Application of Tape
LMS-RTEC325	9.5-20mm	3 x 25 mm

➤ Material : Brass



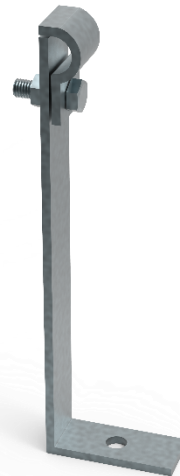
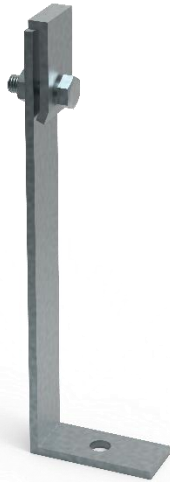
TAPE SUPPORT



Part No.	Tape size (mm)
LMS-TS253	25 x 3
LMS-TS203	20 x 3

➤ Material: Stainless Steel

LIGHTNING PROTECTION CONDUCTOR SUPPORT



EXOTHERMIC WELDING CONNECTION

LMS welding is to melt the metal conductor through the high temperature produced by the oxidized metals in the reductive flux during the exothermic welding reaction. This series of products include exothermic welding moulds, mould handle clamp, exothermic welding flux and supporting operation Tool kit.

LMS Performance

- Good Mechanical Performance
- Strong Current Load Capacity
- Resistant to Large Repeated Current
- Convenient and Safe Construction
- Controllable Welding Temperature
- Strong Anti Corrosion Capacity

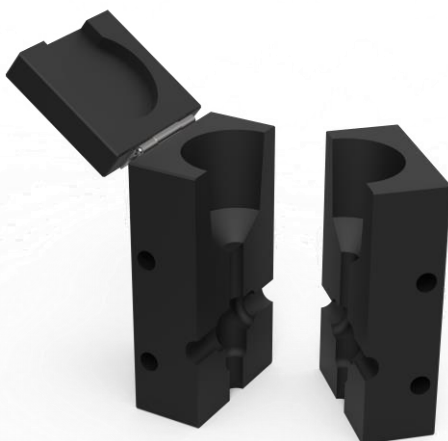
REQUIRED TOOL FOR CONNECTION

- HANDLE CLAMP
- FLINT GUN
- EXOTHERMIC WELDING MOULD
- EXOTHERMIC WELDING POWDER



EXOTHERMIC WELDING POWDER

Part No.	Specifications
LMS-EWP65	65#
LMS-EWP90	90#
LMS-EWP115	115#
LMS-EWP200	200#
LMS-EWP250	250#
LMS-EWP300	300#
LMS-EWP350	350#



EXOTHERMIC WELDING MOULD

Part No.	Applicable For
LMS-MC	Cable to Cable
LMS-MB	Busbar Tape to Busbar Tape
LMS-MCB	Cable to Busbar Tape

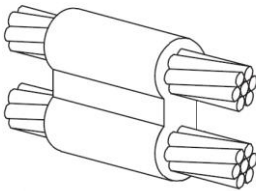
HORIZONTAL CONNECTION



A1

Part No.	Run	Tap	Powder
LMS-A1150150	150 mm	150 mm	150#
LMS-A1120120	120 mm	120 mm	150#
LMS-A129090	95 mm	95 mm	115#
LMS-A17070	70 mm	70 mm	115#
LMS-A15050	50 mm	50 mm	90#

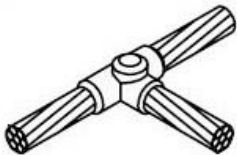
PARALLEL HORIZONTAL CONNECTION



A2

Part No.	Run	Tap	Powder
LMS-A2150150	150 mm	150 mm	300#
LMS-A2120120	120 mm	120 mm	300#
LMS-A239595	95 mm	95 mm	250#
LMS-A27070	70 mm	70 mm	200#

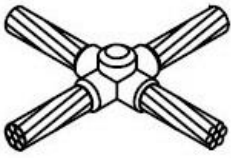
T HORIZONTAL CONNECTION



A3

Part No.	Run	Tap	Powder
LMS-A3240240	240 mm	240 mm	300#
LMS-A3150150	150 mm	150 mm	200#
LMS-A3150120	150 mm	120 mm	200#
LMS-A3120120	120 mm	120 mm	150#
LMS-A312095	120 mm	95 mm	150#
LMS-A39595	95 mm	95 mm	150#
LMS-A39570	95 mm	70 mm	150#
LMS-A37070	70 mm	70 mm	115#
LMS-A35050	50 mm	50 mm	115#

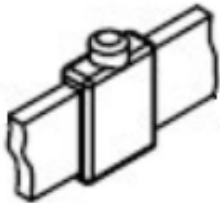
X HORIZONTAL CONNECTION



A4

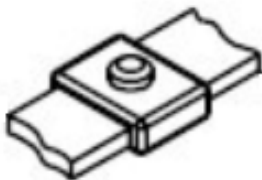
Part No.	Run	Tap	Powder
LMS-A4240240	240 mm	240 mm	300#
LMS-A4150150	150 mm	150 mm	200#
LMS-A4120120	120 mm	120 mm	150#
LMS-A49595	95 mm	95 mm	150#
LMS-A47070	70 mm	70 mm	115#
LMS-A45050	50 mm	50 mm	115#

BUSBAR TAPE TO BUSBAR TAPE CONNECTION



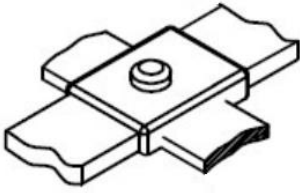
A5

Part No.	Run	Tap	Powder
LMS-A5550550	5 x 50 mm	5 x 50 mm	250#
LMS-A5440440	4 x 40 mm	4 x 40 mm	200#
LMS-A5440425	4 x 40 mm	4 x 25 mm	200#
LMS-A5732732	7 x 32 mm	7 x 32 mm	250#
LMS-A5727727	7 x 27 mm	7 x 27 mm	200#
LMS-A5325325	3 x 25 mm	3 x 25 mm	90#
LMS-A6550550	5 x 50 mm	5 x 50 mm	250#
LMS-A6440440	4 x 40 mm	4 x 40 mm	200#
LMS-A6440425	4 x 40 mm	4 x 25 mm	200#
LMS-A6732732	7 x 32 mm	7 x 32 mm	250#
LMS-A6727727	7 x 27 mm	7 x 27 mm	200#
LMS-A6325325	3 x 25 mm	3 x 25 mm	90#

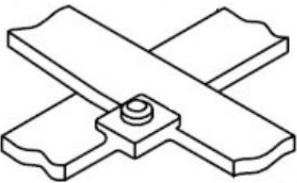


A6

X BUSBAR TAPE TO BUSBAR TAPE CONNECTION



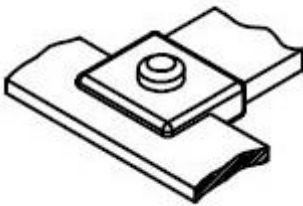
A7



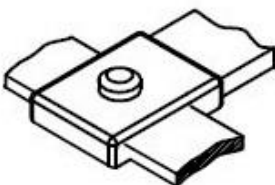
A8

Part No.	Run	Tap	Powder
LMS-A7550550	5 x 50 mm	5 x 50 mm	250#
LMS-A7440440	4 x 40 mm	4 x 40 mm	200#
LMS-A7440425	4 x 40 mm	4 x 25 mm	200#
LMS-A7732732	7 x 32 mm	7 x 32 mm	250#
LMS-A7727727	7 x 27 mm	7 x 27 mm	200#
LMS-A7325325	3 x 25 mm	3 x 25 mm	90#
LMS-A8550550	5 x 50 mm	5 x 50 mm	250#
LMS-A8440440	4 x 40 mm	4 x 40 mm	200#
LMS-A8440425	4 x 40 mm	4 x 25 mm	200#
LMS-A8732732	7 x 32 mm	7 x 32 mm	250#
LMS-A8727727	7 x 27 mm	7 x 27 mm	200#
LMS-A8325325	3 x 25 mm	3 x 25 mm	90#

T BUSBAR TAPE TO BUSBAR TAPE CONNECTION



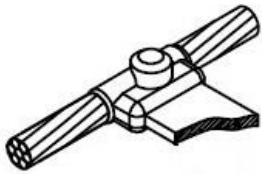
A9



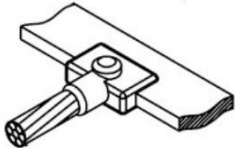
A10

Part No.	Run	Tap	Powder
LMS-A9550550	5 x 50 mm	5 x 50 mm	300#
LMS-A9440440	4 x 40 mm	4 x 40 mm	200#
LMS-A9732732	7 x 32 mm	7 x 32 mm	250#
LMS-A9727727	7 x 27 mm	7 x 27 mm	200#
LMS-A9325325	3 x 25 mm	3 x 25 mm	90#
LMS-A9550550	5 x 50 mm	5 x 50 mm	300#
LMS-A9440440	4 x 40 mm	4 x 40 mm	200#
LMS-A9732732	7 x 32 mm	7 x 32 mm	250#
LMS-A9727727	7 x 27 mm	7 x 27 mm	200#
LMS-A9325325	3 x 25 mm	3 x 25 mm	90#

T CABLE TO BUSBAR TAPE CONNECTION



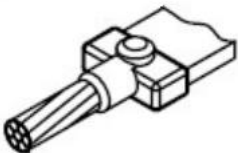
A11



A12

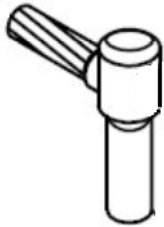
Part No.	Run	Tap	Powder
LMS-A11150440	150 mm	4 x 40 mm	200#
LMS-A1195425	95 mm	4 x 25 mm	200#
LMS-A1195440	95 mm	4 x 40 mm	300#
LMS-A1195550	95 mm	5 x 50 mm	200#
LMS-A1170325	70 mm	3 x 25 mm	90#
LMS-A1150325	50 mm	3 x 25 mm	90#
LMS-A12440150	4 x 40 mm	150 mm	200#
LMS-A1242595	4 x 25 mm	95 mm	200#
LMS-A1244095	4 x 40 mm	95 mm	300#
LMS-A1255095	5 x 50 mm	95 mm	200#
LMS-A1232570	3 X 25 mm	70 mm	90#
LMS-A1232550	3 x 25 mm	50 mm	90#

CABLE TO BUSBAR TAPE HORIZONTAL CONNECTION



A13

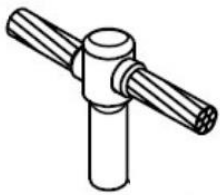
Part No.	Run	Tap	Powder
LMS-A13440150	4 x 40 mm	150 mm	200#
LMS-A1342595	4 x 25 mm	95 mm	200#
LMS-A1344095	4 x 40 mm	95 mm	300#
LMS-A1355095	5 x 50 mm	95 mm	200#
LMS-A1332570	3 x 25 mm	70 mm	90#
LMS-A1332550	3 x 25 mm	50 mm	90#



GR

CABLE TO GROUND ROD (GR)

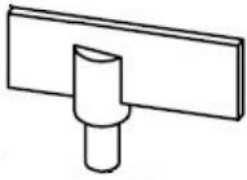
Part No.	Run	Tap	Powder
LMS-GR1801	180 mm	1"	300#
LMS-GR1501	150 mm	1"	200#
LMS-GR1201	120 mm	1"	250#
LMS-GR951	95 mm	1"	200#
LMS-GR701	70 mm	1"	90#
LMS-GR7034		3/4"	90#
LMS-GR7058		5/8"	90#
LMS-GR501	50 mm	1"	90#
LMS-GR5034		3/4"	90#
LMS-GR5058		5/8"	90#



GT

CABLE TO GROUND ROD (GT)

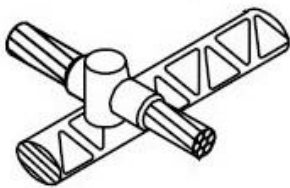
Part No.	Run	Tap	Powder
LMS-GT1801	180 mm	1"	300#
LMS-GT1501	150 mm	1"	200#
LMS-GT1201	120 mm	1"	250#
LMS-GT951	95 mm	1"	200#
LMS-GT701	70 mm	1"	90#
LMS-GT7034		3/4"	90#
LMS-BGT7058		5/8"	90#
LMS-GT501	50 mm	1"	90#
LMS-GT501		3/4"	90#
LMS-GT501		5/8"	90#



B1

BUSBAR TAPE TO GROUND ROD

Part No.	Run	Tap	Powder
LMS-B14401	4 X 40 mm	1"	300#
LMS-B144034		3/4"	300#
LMS-B144058		5/8"	250#
LMS-B15501	5 x 50 mm	1"	300#
LMS-B155034		3/4"	250#
LMS-B155058		5/8"	250#
LMS-B13251	3 X 25 mm	1"	90#
LMS-B132534		3/4"	90#
LMS-B132558		5/8"	90#



B2

CABLE TO REBAR

Part No.	Rebar size	Tap	Powder
LMS-B21695	16 mm	95 mm	250#
LMS-B21670		70 mm	250#
LMS-B21650		50 mm	250#
LMS-B22295	22 mm	95 mm	250#
LMS-B22270		70 mm	250#
LMS-B22250		50 mm	250#
LMS-B22595	25 mm	95 mm	250#
LMS-B22570		70 mm	250#
LMS-B22550		50 mm	250#



HANDLE CLAMP

Part No.	Applicable for
LMS-MCB	Mould LMS-MC1
	Mould LMS-MB1
	Mould LMS-MCB



FLINT GUN

Part No.	Applicable for
LMS-FG	Mould LMS-MC1
	Mould LMS-MB1
	Mould LMS-MCB



FLINT GUN

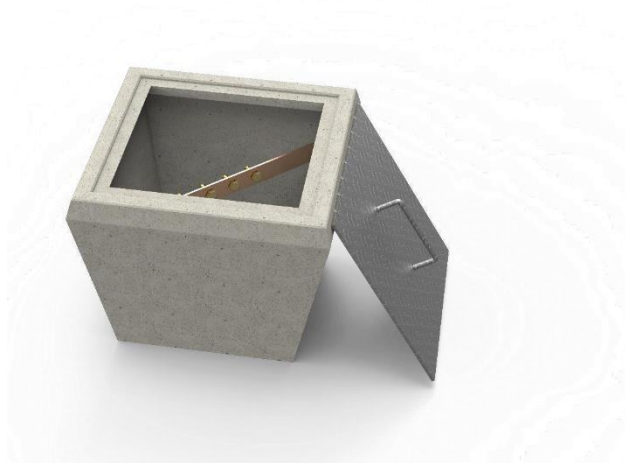
Part No.	Applicable for
LMS-FG	Mould LMS-MC1
	Mould LMS-MB1
	Mould LMS-MCB



SEALING COMPOUND

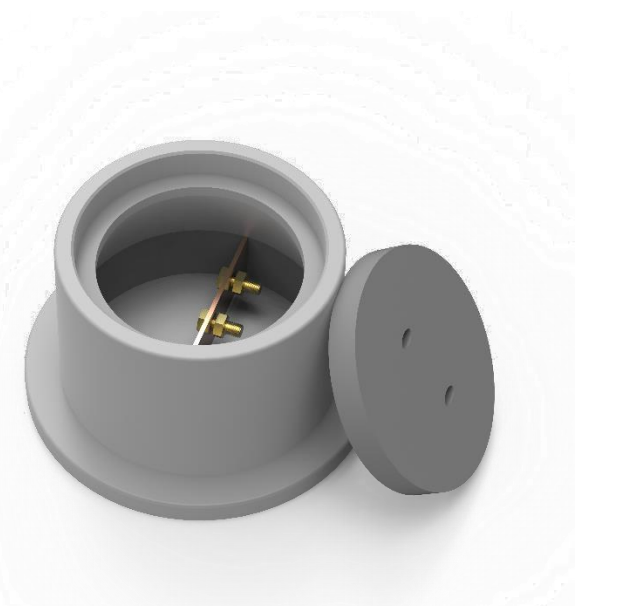
Part No.	Applicable for
LMS-FG	Mould LMS-MC1
	Mould LMS-MB1
	Mould LMS-MCB

OTHER EARTHING MATERIAL



CONCRETE EARTH PIT

Part No.	Size (mm)	Matched Copper Busbar
LMS-CEP1	450X450X370	40X4X530
LMS-CEP2	430X430X500	40X4X530
LMS-CEP3	450X450X500	40X4X530
LMS-CEP4	600X600X800	50X5X750



PVC EARTH PIT

Part No.	Size (mm)	Matched Copper Busbar
LMS-PEP1	230X300X170	40X4X300
LMS-PEP2	280X28X200	40X4X220



GROUND ENHANCEMENT POWDER

Part No.	Size (mm)	Matched Copper Busbar
LMS-PEP1	230X300X170	40X4X300

GROUNDING MODULE

Part No.	Dimensions (mm)	Weight (kg)	Room temperature resistivity ($\Omega \cdot m$)	Frequency grounding resistance ($\rho=40\Omega \cdot m$) (Ω)	Shape
LMS-GM10/50	$\Phi 100 \times 500$	6	≤ 4.5	12	Cylindrical
LMS-GM5/80	$\Phi 150 \times 800$	20	≤ 4.0	7	Cylindrical
LMS-GM26/100	$\Phi 260 \times 1000$	50	≤ 3.5	4	Cylindrical
LMS-GM50/40/6	$500 \times 400 \times 60$	20	≤ 3.0	6	Plate-shaped





All instruction sheet is available from our representative. Improper installation, missuse, missaplication or other failure can cause a damage or serious injury or death. 2020 LMS[©]. All LMS[©] marks and logos are owned by PT Lancar Makmur Sejahtera. LMS[©] reserves the right to change specification without notice.

Office Address:

PT Lancar Makmur Sejahtera
SCBD Ruko Sentra Menteng MN 36 Sektor 7
Bintaro Jaya Tangerang Selatan
Email : lancar@lancarms.com
Phone : 021-7454790